

- Over 30 YEARS Supplying Africa -



BirCRAFT

GEARED MOTORS - LINEAR ACTUATORS - CONTROLS

Website: www.bircraft.co.za Fax: 086 694 5806 E-mail: 01@bircraft.co.za International Tel. +27 11 468 1881 Fax: 011 468 1698
 National Sales: **0861 BIRCRAFT** National Sales: **086 124 7272** Cell: **074 465 1744**
BEE Certified



Worm Gear Reducers:

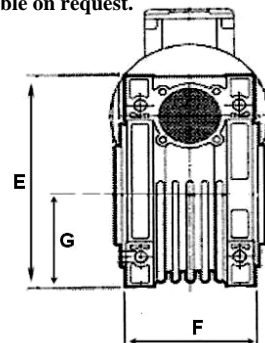
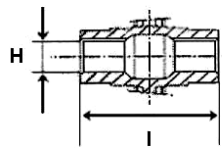
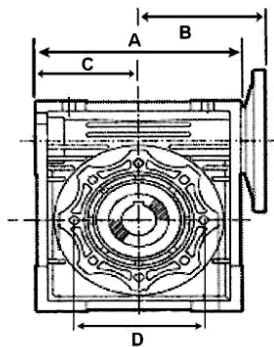
Short Form Selection

Based on 1400 rpm input speed

Model	Ratio	Output Rpm	Torque N	Max. Input Power	Dimensions in mm	
				kW		
30	7	200	15	0.37	A	80
	10	140	17	0.31	B	55
	15	93	18	0.23	C	40
	20	70	15	0.16	D	65
	30	46	19	0.15	E	97
	40	35	16	0.1	F	56
	50	28	15	0.08	G	40
	60	23	15	0.07	H	14
40	7	200	37	0.93	A	100
	10	140	42	0.75	B	70
	15	93	42	0.54	C	50
	20	70	37	0.37	D	75
	30	46	43	0.34	E	122
	40	35	40	0.24	F	71
	50	28	38	0.2	G	50
	60	23	36	0.17	H	18
50	7	200	68	1.7	A	120
	10	140	73	1.3	B	80
	15	93	76	0.93	C	60
	20	70	74	0.71	D	85
	30	46	80	0.6	E	144
	40	35	81	0.45	F	85
	50	28	72	0.34	G	60
	60	23	69	0.3	H	25
63	7	200	115	2.9	A	144
	10	140	126	2.2	B	95
	15	93	131	1.6	C	72
	20	70	136	1.3	D	95
	30	46	135	1	E	174
	40	35	145	0.79	F	103
	50	28	125	0.58	G	72
	60	23	127	0.54	H	25
75	7	200	205	5.05	A	172
	10	140	220	3.86	B	112
	15	93	230	2.79	C	86
	20	70	220	2.07	D	115
	30	46	255	1.87	E	205
	40	35	230	1.25	F	112
	50	28	220	1.02	G	86
	60	23	200	0.82	H	28
90	7	200	320	7.8	A	206
	10	140	347	6	B	130
	15	93	371	4.4	C	103
	20	70	381	3.5	D	130
	30	46	414	2.9	E	238
	40	35	406	2.1	F	130
	50	28	368	1.6	G	103
	60	23	344	1.3	H	35
100	7	200	170	0.48	I	120
	10	140	170	0.48		
	15	93	170	0.48		
	20	70	170	0.48		
	30	46	170	0.48		
	40	35	170	0.48		
	50	28	170	0.48		
	60	23	170	0.48		

Model	Ratio	Output Rpm	Torque N	Max. Input Power	Dimensions in mm	
				kW		
63	7	200	115	2.9	A	144
	10	140	126	2.2	B	95
	15	93	131	1.6	C	72
	20	70	136	1.3	D	95
	30	46	135	1	E	174
	40	35	145	0.79	F	103
	50	28	125	0.58	G	72
	60	23	127	0.54	H	25
75	7	200	205	5.05	A	172
	10	140	220	3.86	B	112
	15	93	230	2.79	C	86
	20	70	220	2.07	D	115
	30	46	255	1.87	E	205
	40	35	230	1.25	F	112
	50	28	220	1.02	G	86
	60	23	200	0.82	H	28
90	7	200	320	7.8	A	206
	10	140	347	6	B	130
	15	93	371	4.4	C	103
	20	70	381	3.5	D	130
	30	46	414	2.9	E	238
	40	35	406	2.1	F	130
	50	28	368	1.6	G	103
	60	23	344	1.3	H	35
100	7	200	170	0.48	I	120
	10	140	170	0.48		
	15	93	170	0.48		
	20	70	170	0.48		
	30	46	170	0.48		
	40	35	170	0.48		
	50	28	170	0.48		
	60	23	170	0.48		

Larger Gear units available on request.



Optional Extras :-

Single or Double output shafts,
Output Flange, Torque Arm.

Dimension Drawing:

Guide lines Only – Subject to change.

For more detailed data contact our Sales Department.