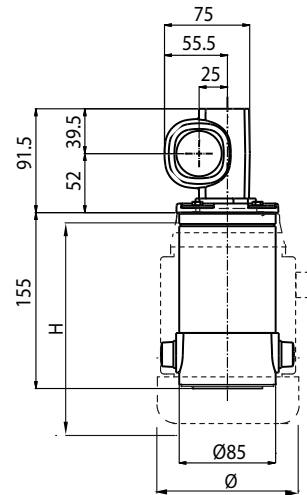
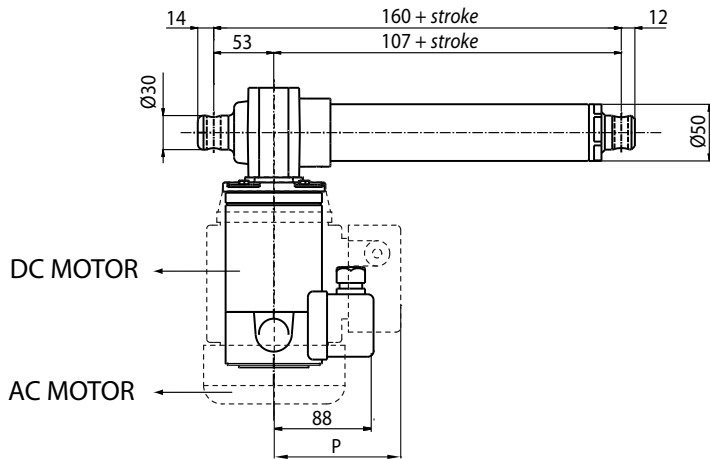
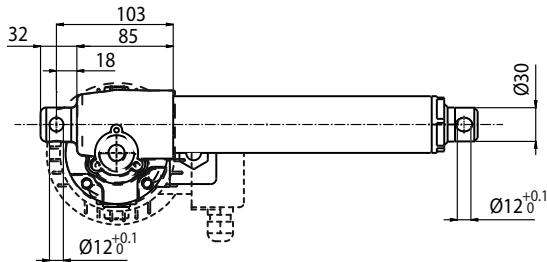


ALI4 Version without limitswitches

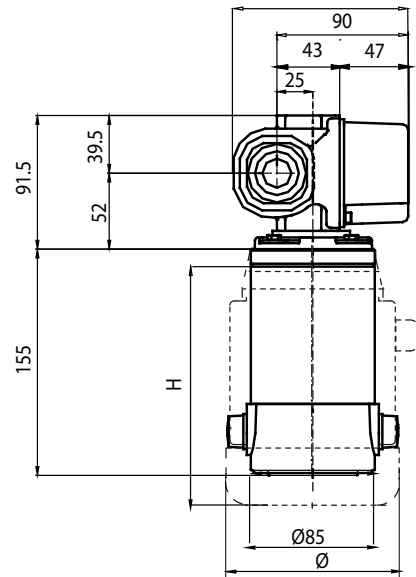
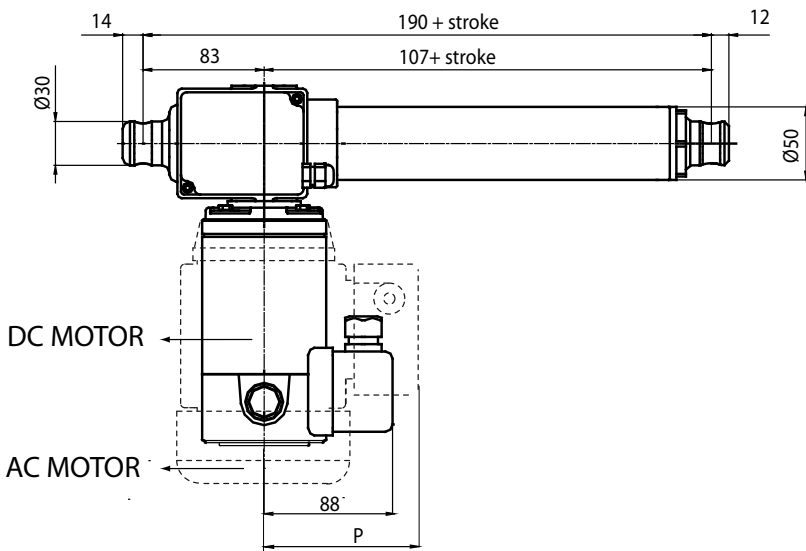


A.C. MOTORS DIMENSIONS				
GR. / SIZE	TYPE	H	Ø	P
56	Standard	168	116	108
	Brake motors	200		
63	Standard	190	129	110
	Brake motors	235		
71	Standard	220	146	121
	Brake motors	267		

With safety nut "G" = + 30 mm
 ALI4-VRS = + 25 mm (safety nut unavailable)
 Bellows + 20mm (for FCM limitswitches contact our Offices)

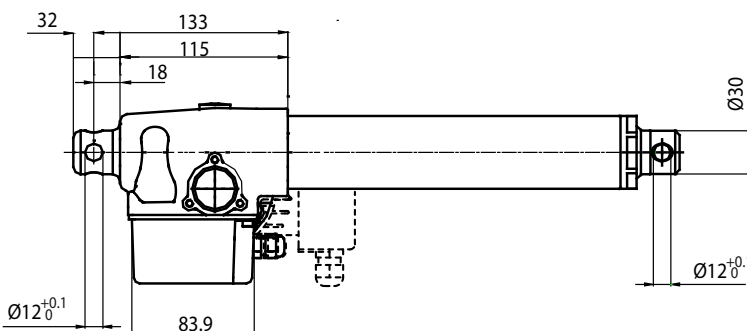


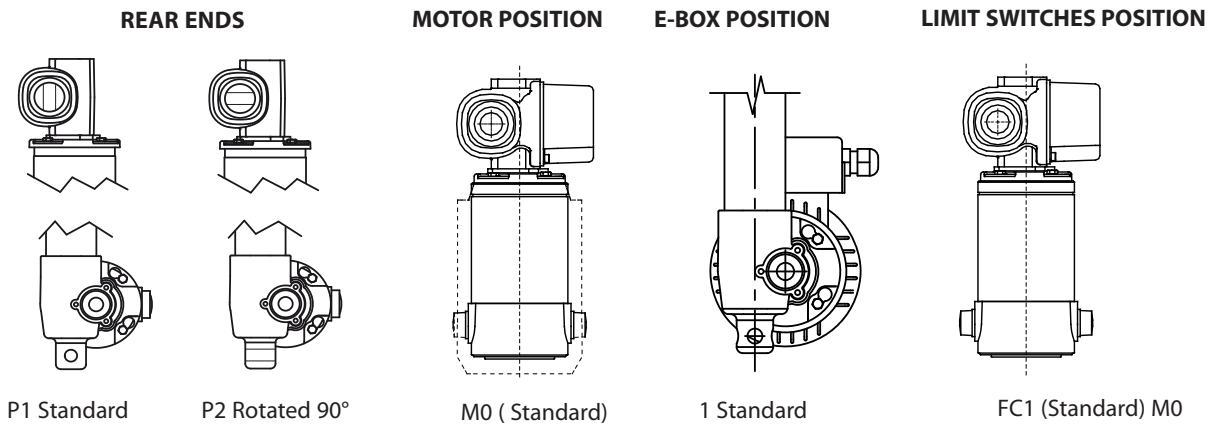
ALI4-F Version with limitswitches



A.C. MOTORS DIMENSIONS				
SIZE	TYPE	H	Ø	P
56	Standard	168	116	108
	Brake motors	200		
63	Standard	190	129	110
	Brake motors	235		
71	Standard	220	146	121
	Brake motors	267		

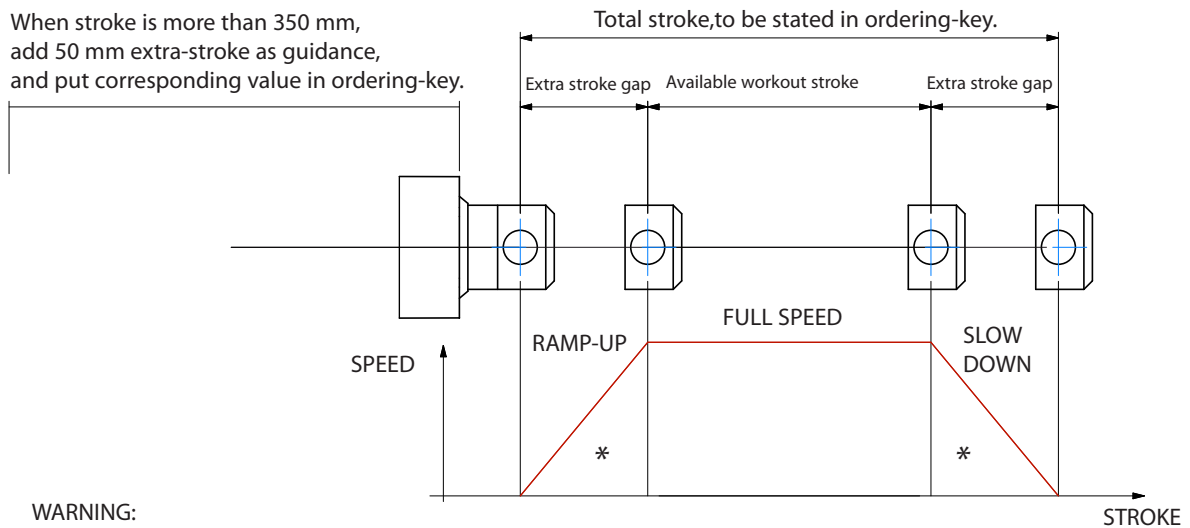
With safety nut "G" = + 30 mm
 ALI4-VRS = + 25 mm (safety nut unavailable)
 Bellows + 20mm (for FCM limitswitches contact our Offices)





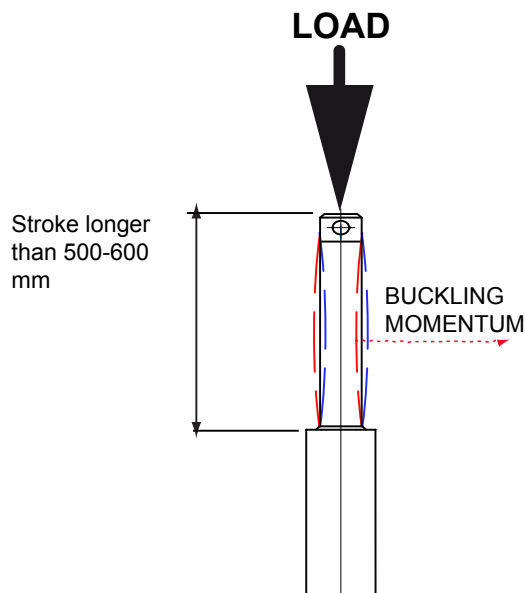
STROKE SETUP: Useful tips for handling stroke and avoid run-on-block collision.

When stroke is more than 350 mm, add 50 mm extra-stroke as guidance, and put corresponding value in ordering-key.



WARNING:
 SPEED-TIMING ALONG STROKELENGTH:
 ramps are extremely important when speed is > 40mm/s !!! Inverter or PWM drive recommended!
 * The more speed raises the more extra stroke has to raise too.

BUCKLING: With strokes longer than 500mm, BUCKLING can be a risk: please check mounting with our offices and/or see user manuals.



IMPORTANT:
 Long strokes, even if load is low, can generate significant buckling momentums, as sketch slows.
 This happens when actuator is in its all-opened position: that's the reason why we recommend 100 mm extra-stroke.
 Pushtube will have this 100 mm-portion always inside the overtube, improving guidance against buckling.
 For more information on this, contact our office.

ALI4 / 0250 / M01 / CA-400/50-T-56-4-0,09 / AB / FC1 / M0 / 1 / E01 / 2FC2 / POT01A / P1 / A1

MODEL: _____
 ALI4 / ALI4-F / ALI4-FCM / ALI4-FCI
 ALI4-VRS / ALI4-VRS-F / ALI4-VRS-FCM
 ALI4-VRS-FCI

STROKE: _____
 es. 250 mm = 0250

VERSION: (Pag. 37) _____
 Advise: choose among
 M00 Not standard speed
 Flanged Version = Rpm
 Advise reduction ratio and screw pitch

MOTOR: _____
 Advise only if with motor:
A.C.: version, voltage, type, size, n°pole, power
D.C.: version, voltage, size, Rpm
 With motorflange only put 0
 With special motorflange put: PD

AC MOTOR OPTIONS: (Pag. ACCESSORIES) _____
 Motorflange: for motorflange version only advise size - i.e. for IEC56 B14 put 56B14
 No motor or DC motor: leave all following parameters blank
 Protection Degree: IP65, for selfbrake motor IP54 standard
 Brake type: for brakemotors only: ES, FECA
 Options: Advise if needed (ES, AB 2'shaft)

LIMIT SWITCHES POSITION: _____
FC1 None: Leave blank

MOTOR POSITION: _____
M0 None: Leave blank

E-BOX POSITION: _____
1 No Motor: Leave blank

ENCODER: (Pag. ACCESSORIES) _____
 None: Leave blank

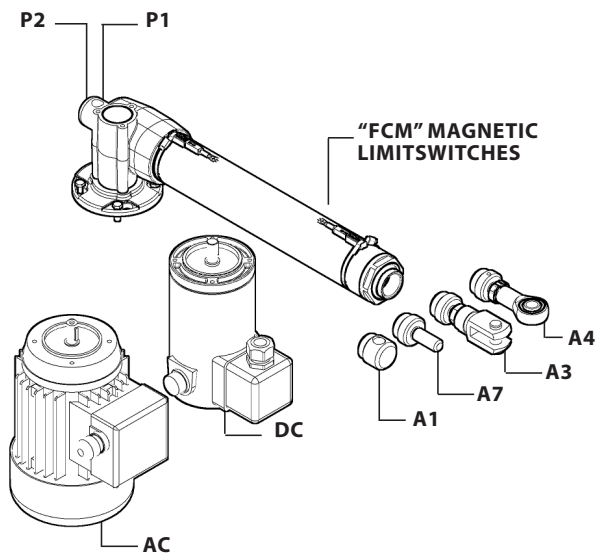
LIMIT SWITCHES: (Pag. ACCESSORIES) _____
 None: Leave blank

POTENTIOMETER: (Pag. ACCESSORIES) _____
POT01A (1Kohm) **POT10A** (10Kohm) None: Leave blank

REAR END: _____
P1 = Eyelet (standard) **P2** = Eyelet (90°)

FRONT END: _____
A1 = Eyelet (Std pag.38) **A3** = Yoke + Clip
A4 = Rod end **A7** = M12 male

NOTE: COMPLETE THE ORDERING KEY ADDING THE OPTIONS YOU CAN FIND IN THE "ACCESSORIES AND OPTIONS" SECTION.



Note: "B" dimension variations depending on model

ALI4 = see pictures	ALI4-F = + 30 mm	ALI4-FCM = + 42,5 mm	ALI4-FCI = + 42,5 mm
	with safety nut "G" = + 30 mm	(i.e. ALI4-F "G" option = +30)	
ALI4-VRS (versione 16x5) = + 25 mm	ALI4-VRS-F (versione 16x5) = + 55 mm		
ALI4-VRS-FCM (versione 16x5) = + 53 mm	ALI4-VRS-FCI (versione 16x5) = + 53 mm		
L = + 15 mm			
Bellows = + 15 mm (excluding FCM and FCI version, for versions FCM and FCI contact MecVel)			

