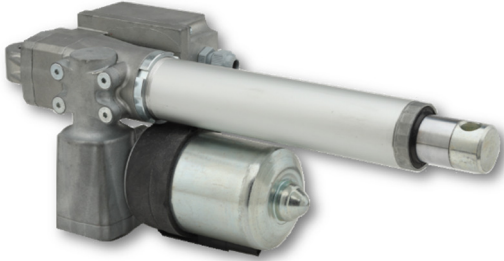


t: +(27) 011 468 1881 c: +(27) 074 465 1744
 e: 01@BirCraft.co.za w: www.BirCraft.co.za

Linear Actuators

ALI 2 - P – Model

Features and Options:



- ✓ Permanent magnet motor CE
- ✓ Double worm gearbox
- ✓ Acme lead screw or ball screw (VRS)
- ✓ Chrome plated steel push rod
- ✓ Permanent grease lubrication
- ✓ IP 65, tested according to rule CEI EN 60529
- ✓ Working temperature range -10°C +60°C
- ✓ Intermittent duty S3 30% (5 min) a 30°C*

For any special duty requests, please contact our Sales Department for more assistance.

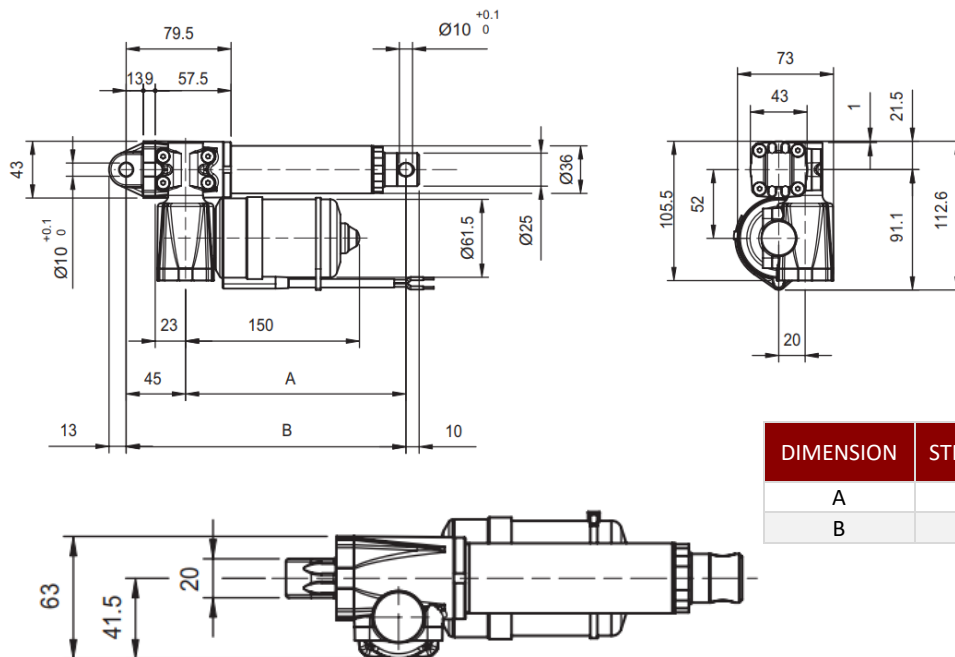
ALI2 (VAC 3 – PHASE)

FMAX (N)	SPEED (MM/S)	VERSION	MOTOR SIZE	MOTOR SPEED (RPM)	MAX CURRENT FOR FMAX (A) – 24VDC ²
2400	30	M01	61.5	4000	8.2
2600	20	M02			7.8
3000	15	M03			6
4200	10	M04			7
4200	7	M05			5.8
4200	5	M06			4.8
4200	2.5	M07			3.2
4200	1.2	M08			2.6
4200	0.6	M09			1.8

¹When stroke is longer than 350mm, check STROKE SETUP section

²For 12 Vdc power supply currents are doubled and loads are 20% lower.

ALI2-P Version without limit switches:



DIMENSION	STROKE < TO 320 MM	STROKE > 320MM
A	70 + stroke	80 + stroke
B	115 + stroke	125 + stroke

THIS DOCUMENT DISPLAYS THE MOST TYPICAL STANDARD FEATURES AND SETUPS. PLEASE CONTACT OUR SALES TEAM FOR MORE INFORMATION

Linear Actuators

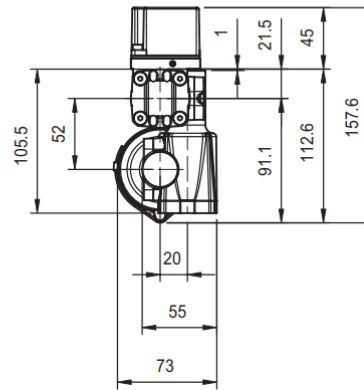
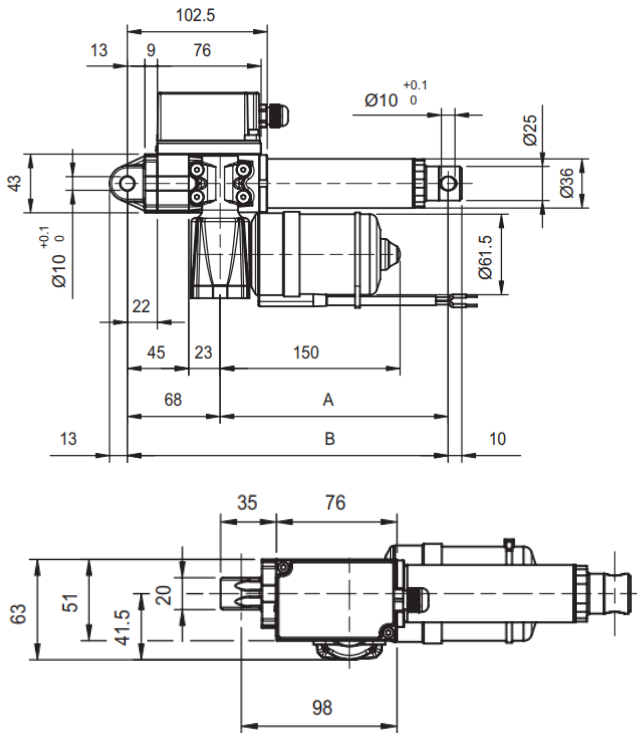
ALI 2-P – Model

BirCraft

GEARED MOTORS - LINEAR ACTUATORS - CONTROLS

- Over 40 Years of Supplying Africa -

ALI2-P-F Version with limit switches:

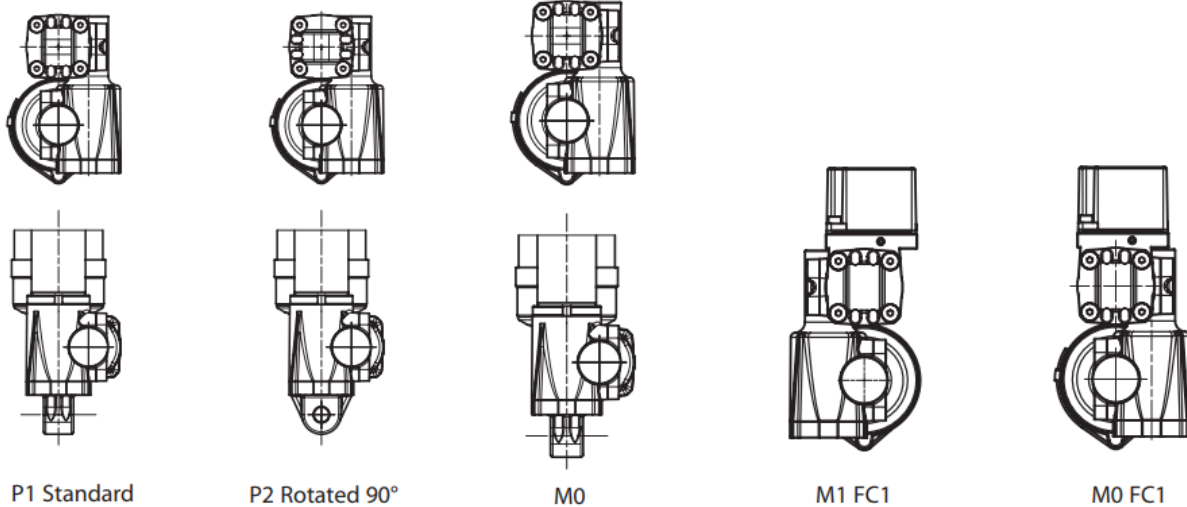


DIMENSION	STROKE < TO 320 MM	STROKE > 320MM
A	70 + stroke	70 + stroke
B	138 + stroke	148 + stroke

REAR ENDS

MOTOR POSITION

MOTOR AND LIMIT SWITCHES POSITION



Stroke Setup:

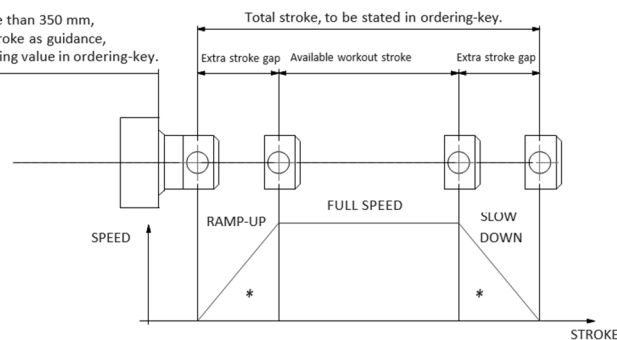
Useful tips for handling stroke and avoid run-on-block collision

WARNING:

SPEED-TIMING ALONG STROKELENGTH:
Ramps are extremely important with high speed. Inverter or PWM drive recommended.

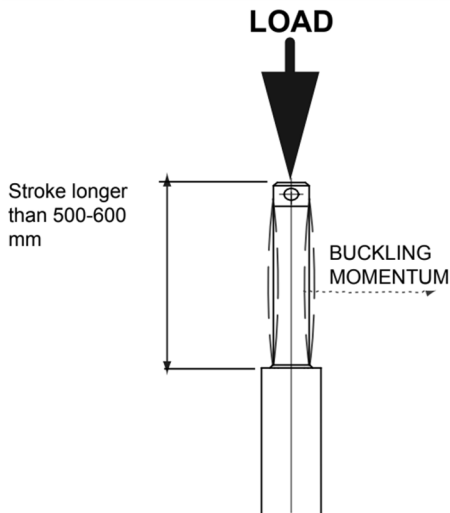
* The more speed raises the more extra stroke must raise too.

When stroke is more than 350 mm, add 50 mm extra-stroke as guidance, and put corresponding value in ordering-key.



Buckling:

When stroke is longer than 500 mm, BUCKLING can be a risk
Please check mounting with our Sales Department.



IMPORTANT:

Long strokes, even if load is low, can generate significant buckling momentums, as sketch slows.

This happens when actuator is in its all-opened position: that's the reason why we recommend 100 mm extra-stroke.

Pushtube will have this 100 mm-portion always inside the overtube, improving guidance against buckling.

For more information on this, please contact our Sales Department.

Ordering Key:

ALI2P / 0250 / M01 / 61,5-24 / 2FC1 / POT01A / E01 / M0FC1 / P1 / A1

MODEL: _____

ALI2-P ALI2-PF
ALI2-P-FCM

STROKE: _____

es. 250 mm = 0250

VERSION: _____

M01 / M02 / M03 / M04 / M05 / M06 / M07 / M08 / M09
M00 = Not standard speed

MOTOR: _____

12 = 12 Vcc
24 = 24 Vcc

LIMIT SWITCHES: _____

None: Leave blank

POTENTIOMETER: _____

POT01A (1Kohm) POT10A (10Kohm) None: / Leave blank

ENCODER: _____

None: Leave blank

LIMIT SWITCHES POSITION: _____

M0FC1
M1FC1

None: Leave blank

REAR END: _____

P1=Eyelet (Standard) P2=Eyelet (90°)

FRONT END: _____

A1 = Eyelet A4 = Rod end

A3 = Yoke + Clip A7 = M10 male

NOTE: COMPLETE THE ORDERING KEY ADDING THE OPTIONS YOU CAN FIND IN THE "ACCESSORIES AND OPTIONS" SECTION ON THE BIRDCRAFT WEBSITE.

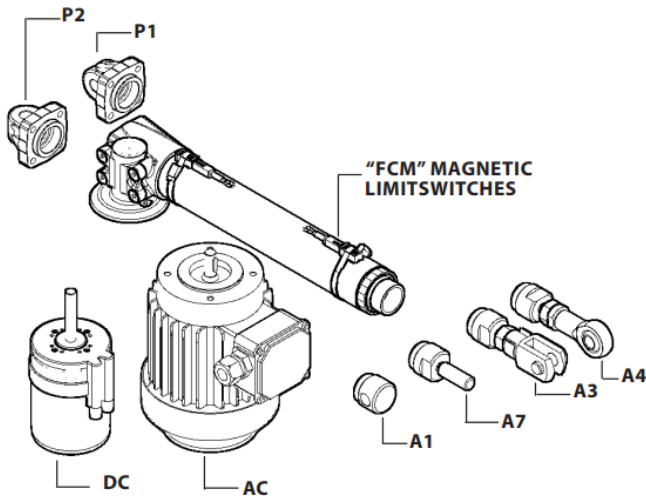
Linear Actuators

ALI 2-P – Model

BirCraft

GEARED MOTORS - LINEAR ACTUATORS - CONTROLS

- Over 40 Years of Supplying Africa -



Notes:

“B” dimension changes according to model

- ALI2-P= See pictures
- ALI2-P stroke > 320 mm = + 10 mm
- ALI2-PF = + 23 mm
- ALI2-PF stroke > 320 mm = +33
- ALI2-P-FCM = + 33 mm
- ALI2-P-FCM stroke > 320 mm = +43 mm

With safety nut “G” = + 30 mm
Bellows = + 20mm

