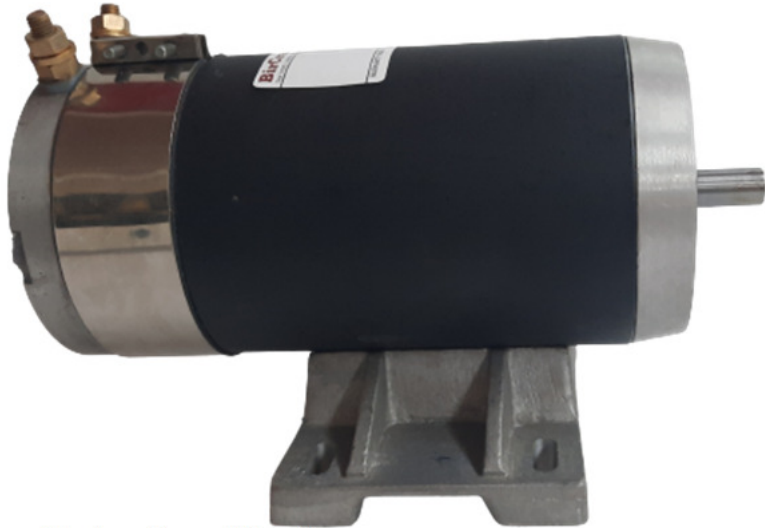


t: + (27) 011 468 1881 c: + (27) 074 465 1744
 e: 01@BirCraft.co.za w: www.BirCraft.co.za

12 / 24Vdc Motors GSM600.120 and GSM600.240



Features:

- Permanent Magnet DC Motor
- Available in 12Vdc and 24Vdc
- Other Voltages available on request
- Removeable Feet

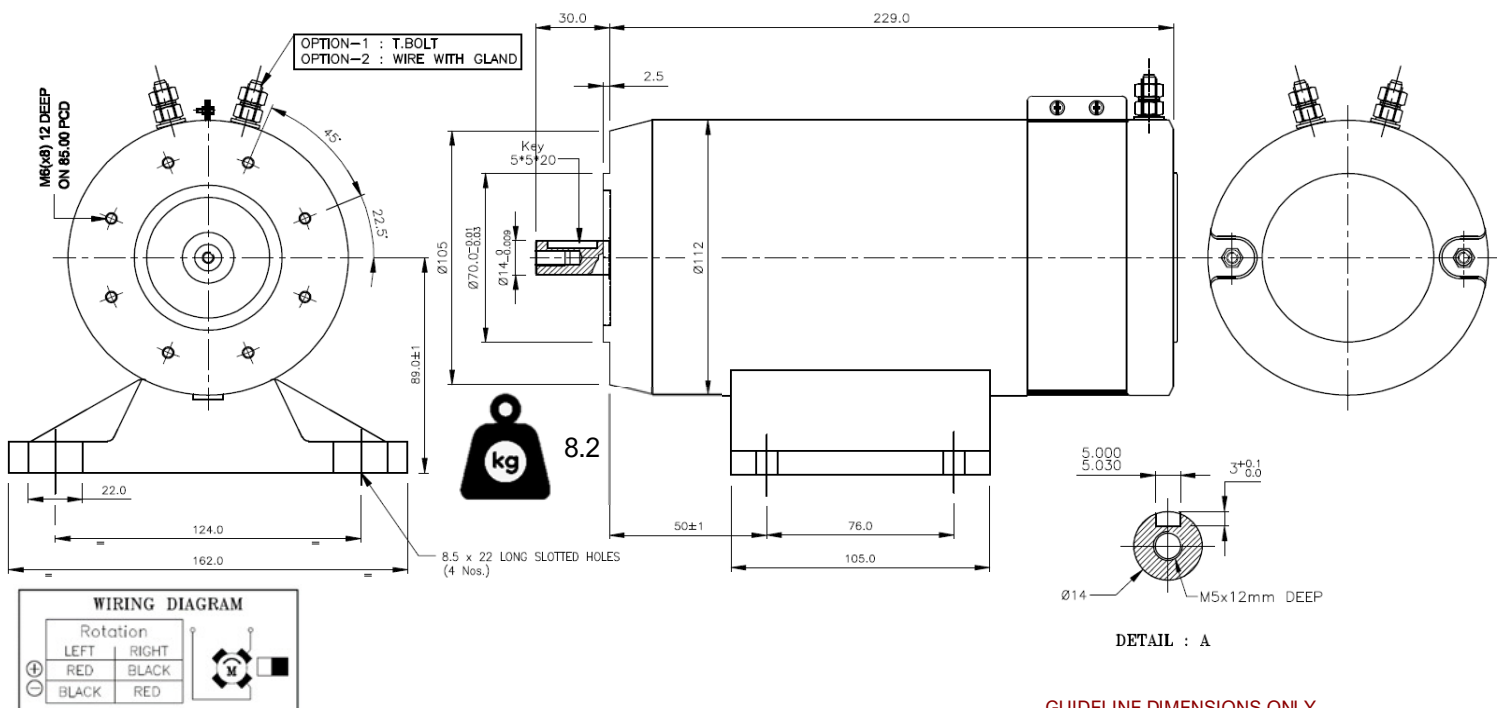
Motor Specifications:

PRODUCT CODE	WATTS	RPM	VOLTS	CURRENT	DUTY	INSULATION CLASS	IP
GSM600.120	600	3000	12	36	S1	F	55
	750			90	S2		
GSM600.240	600		24	72	S1		
	750			45	S2		

RPM = Revolutions per Minute / S1 = Continuous running duty / S2 = Short Time Duty – Motor works at a constant load, but NOT long enough to reach temperature equilibrium and ensure the rest period is long enough for the motor to reach ambient temperature.

Dimensions:

Guidelines are in mm



GUIDELINE DIMENSIONS ONLY

Address: 320 B Percheron Road, Kyalami, Midrand, 1684
 GPS Coordinates: S 25.98115° / E 028.06869°

Information supplied here within is as per the latest documentation received from our partners. Our Partners reserve the right to make modifications without notice. Please speak to the BirCraft team for the most updated information. Please note that the Customer is responsible for determining that the product will perform suitably for their intended application.